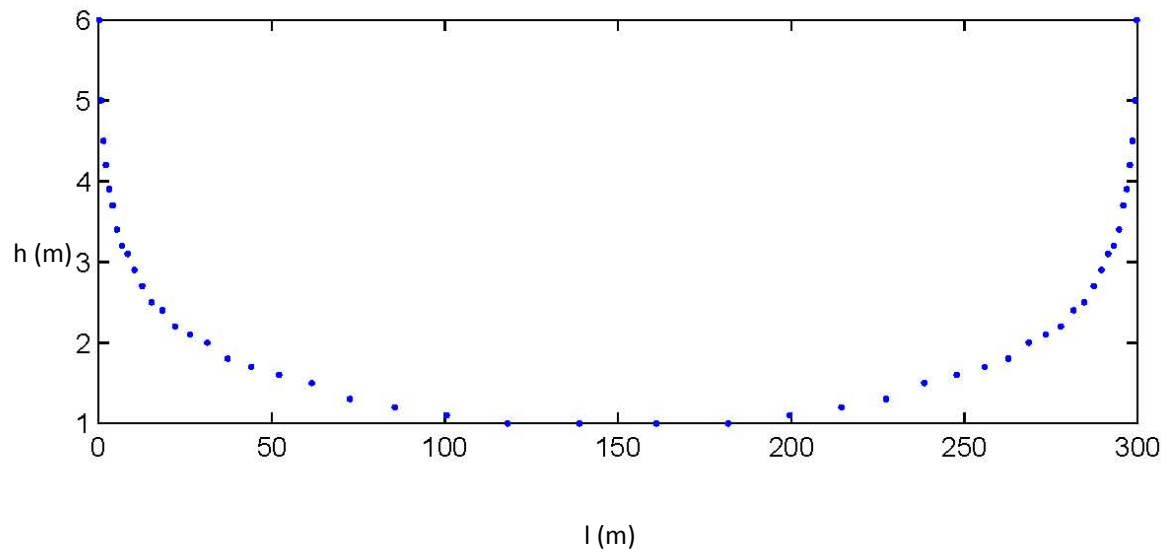
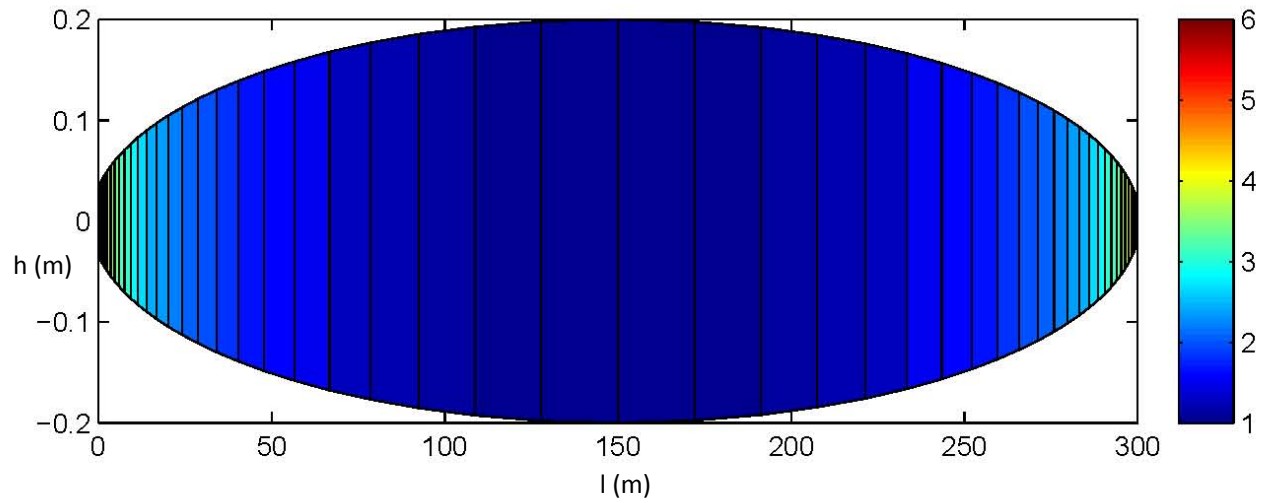
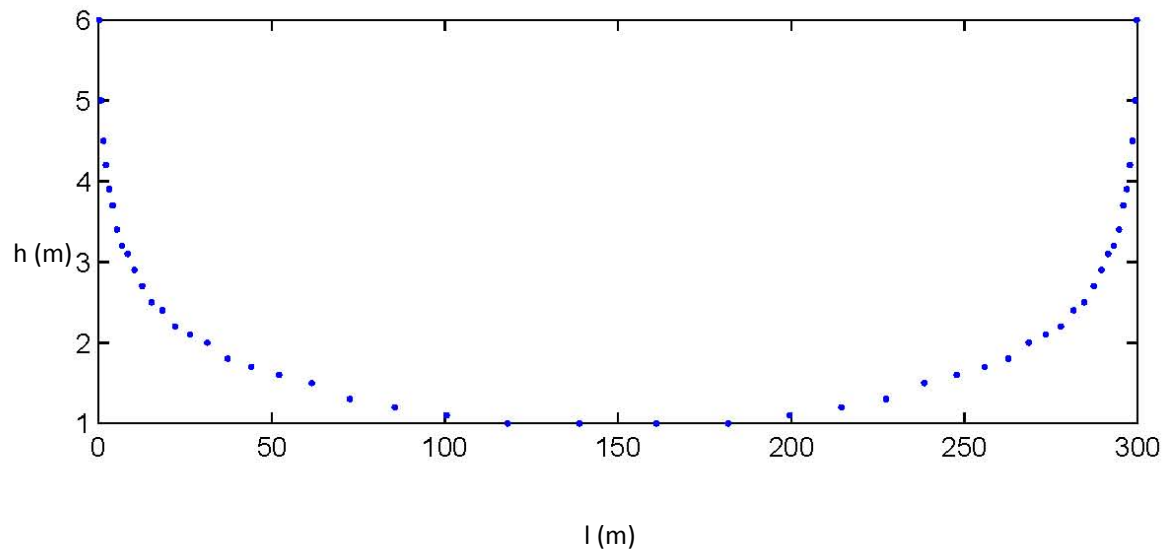


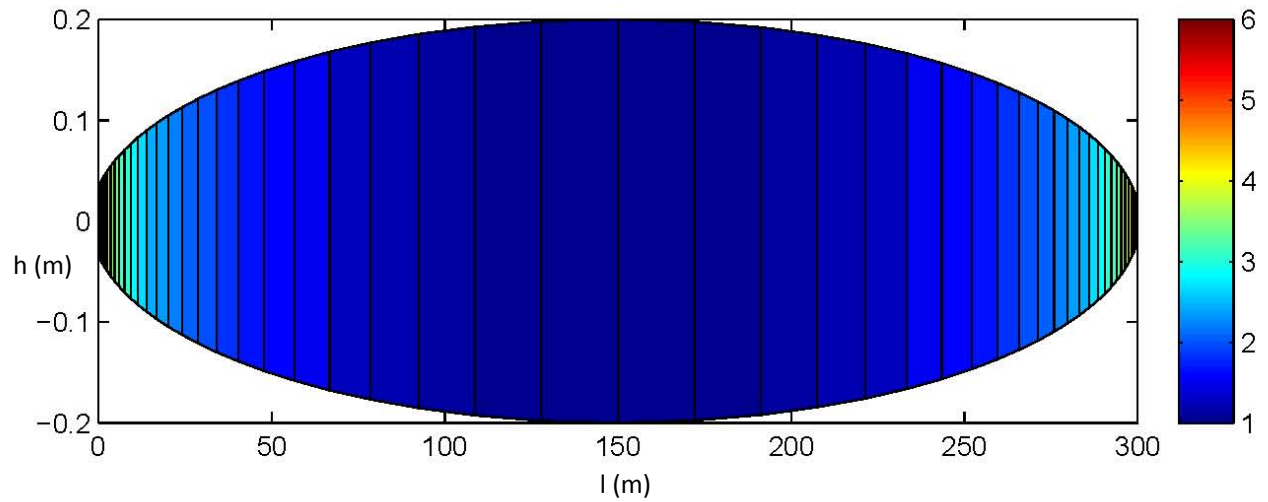
Ni/Ti or Ni coating  
Glass substrate with B





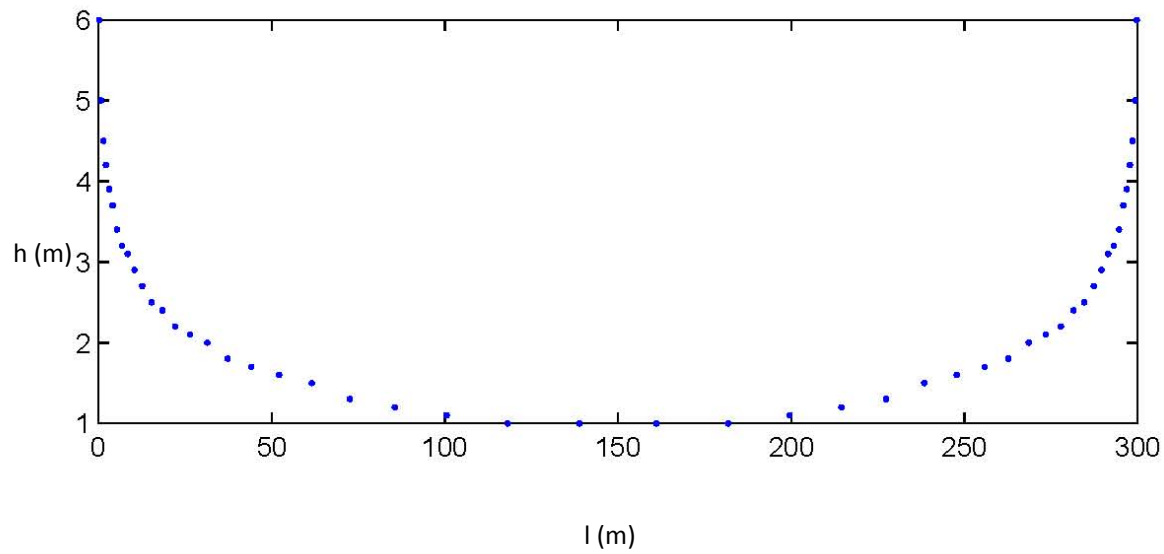
Ni/Ti or Ni coating  
Glass substrate with B  
Guide 10k Euro/m  
Shielding 20k Euro/m

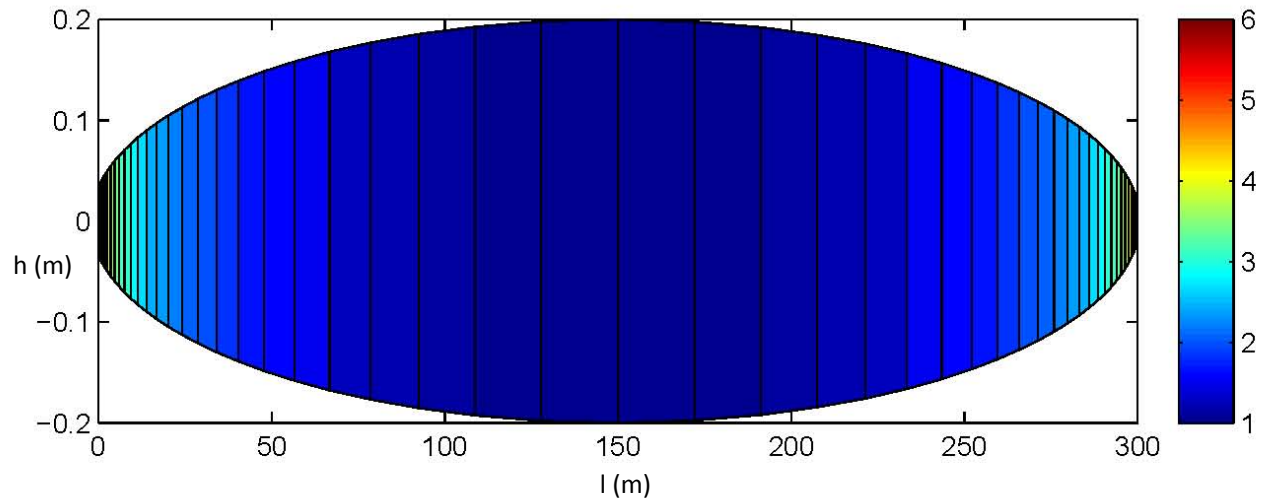




Ni/Ti or Ni coating  
 Glass substrate with B  
 Guide 10k Euro/m  
 Shielding 20k Euro/m

1:  
 Ni/Ti  $11 \cdot 10^{-6} \text{ \AA}^{-2}$   
 Ni58/Ti  $17 \cdot 10^{-6} \text{ \AA}^{-2}$   
 Ni58/Ni62  $21 \cdot 10^{-6} \text{ \AA}^{-2}$

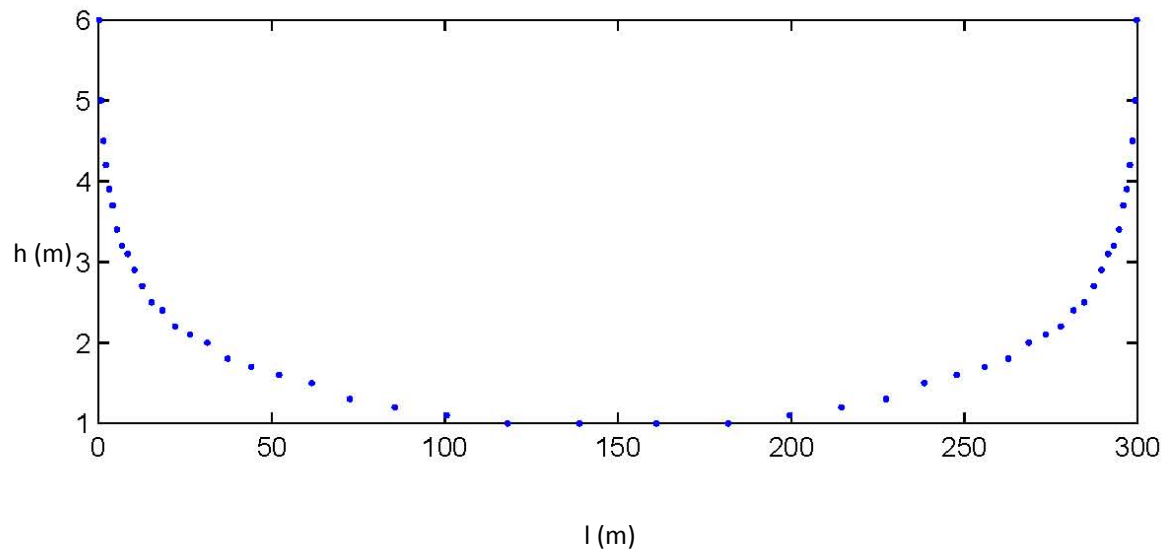


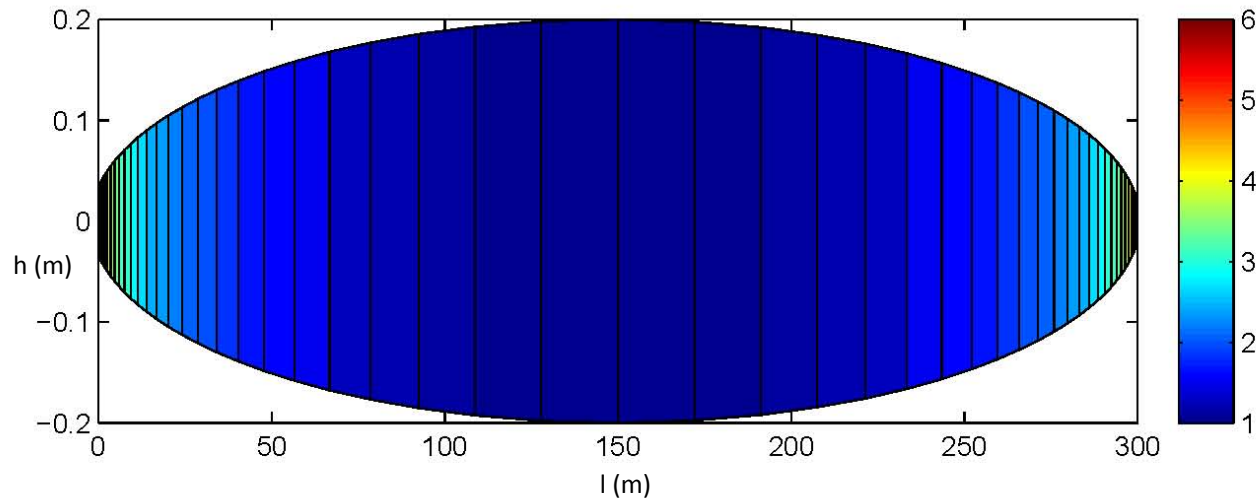


Ni/Ti or Ni coating  
 Glass substrate with B  
 Guide 10k Euro/m  
 Shielding 20k Euro/m

1:  
 Ni/Ti  $11 \cdot 10^{-6} \text{ \AA}^{-2}$   
 Ni58/Ti  $17 \cdot 10^{-6} \text{ \AA}^{-2}$   
 Ni58/Ni62  $21 \cdot 10^{-6} \text{ \AA}^{-2}$

2:  
 Ni 8-9 MeV  
 B >10 MeV





Ni/Ti or Ni coating  
 Glass substrate with B  
 Guide 10k Euro/m  
 Shielding 20k Euro/m

1:

Ni/Ti  $11 \cdot 10^{-6} \text{ \AA}^{-2}$

Ni58/Ti  $17 \cdot 10^{-6} \text{ \AA}^{-2}$

Ni58/Ni62  $21 \cdot 10^{-6} \text{ \AA}^{-2}$

2:

Ni 8-9 MeV

B >10 MeV

Be 6-7 MeV

Gd 6-7 MeV

Au 5-6 MeV

